

How are students identified as needing case management?

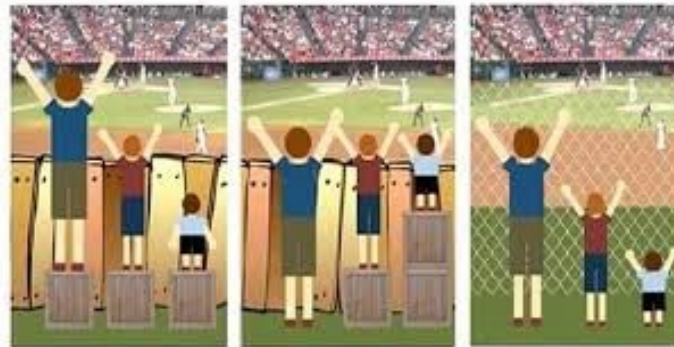
When a student enrolls, the administration team carefully look at the data and the needs of the student. A recommendation is then made for case management and further work is done to determine student needs and decide if this is the right support and direction for the student. Data is also reviewed throughout the school year to identify other students who may benefit from this support.

When/how does a student stop being case managed?

If a student has been case managed and demonstrates ongoing social and academic success with little support or intervention by the case manager, a decision by the Student Services team, may be made to move the student to the 'monitoring' phase of case management for a further term. This phase does not involve goal setting with the student, but does allow the student to meet with the case manager who can assist them to resolve issues, if needed. If at the end of the term, the student's data remains 'on track' and the student does not need the support they will cease to be case managed.

How do high school students feel about being case managed?

Most students enjoy having a key person within the school that they can speak to and who supports them! The teacher-case managers really like it too because they get to know students well and get to celebrate success with them.



Want more information? Like to have a chat about case management???

Mrs Erin Kerr
Program Coordinator
5465 6111
ekerr38@eq.edu.au



Case Management at Boonah State High School



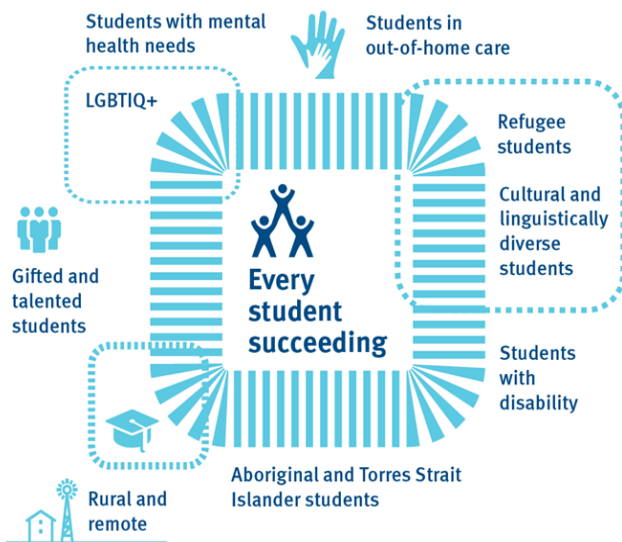
"Supporting students to experience success, every day so that they can have a life of choice not chance"

What is case management?

At Boonah SHS, case management is a collaborative process where a teacher-case manager develops, monitors, communicates and evaluates a plan of action, including supportive care, to enable students with support needs to overcome challenges and enhance engagement.

Who is supported by case management?

Case Management is designed for any student with a diverse learning need who may need additional support.



Why do we case manage at Boonah SHS?

We have high expectations of all students, recognising that, with the right support, all students can succeed.

We believe that young people, from all social, cultural, community and family backgrounds, and of all identities and all abilities can succeed and that additional intensive support will assist students to achieve to their full potential.



How does a case manager support students?

- They get to know the students by: looking at the data and any other information; by meeting and getting to know the student; and by meeting parents and other stakeholders.
- They develop, review and update a Personalised Learning Plan which communicates, to teachers the students learning needs and the adjustments

that are needed to assist them in the classroom.

- They goal set with the students each term, to develop a personal and meaningful goal which has a positive impact on their engagement and/or achievement at school.
- They work as part of the school team, to link the student into additional school or community based supports or programs.
- They check in with the student and assist with resolving issues which may impact on them or their education.
- They work as an advocate for the student.
- They support the student's family, by being a key point of contact within the school.

